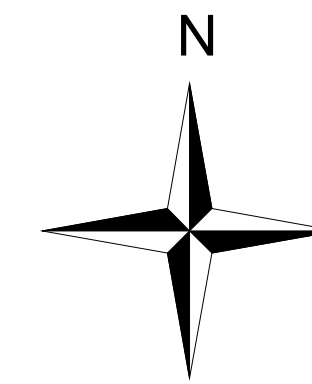
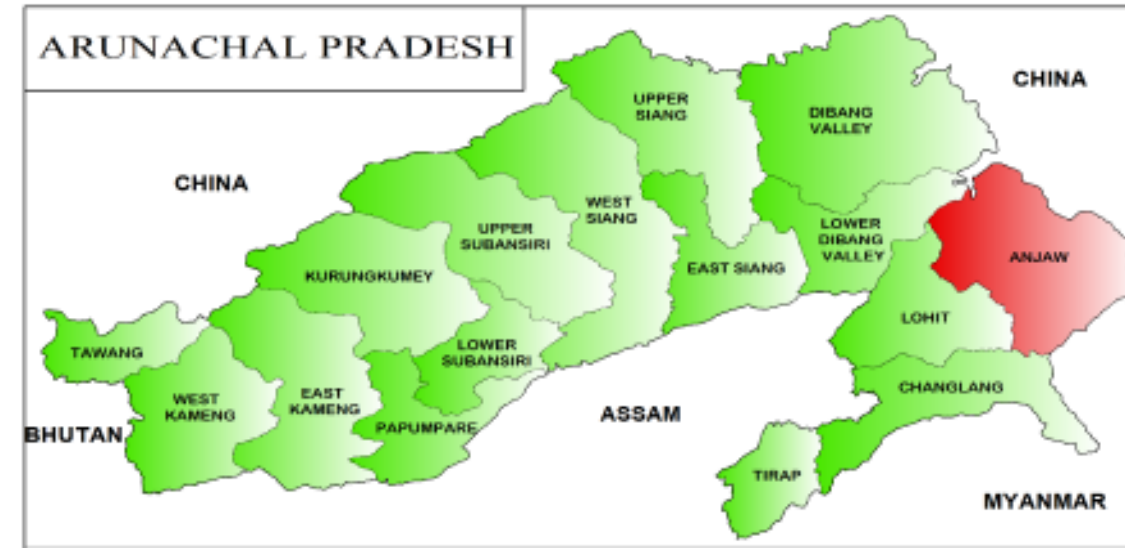


ANJAW DISTRICT ARUNACHAL PRADESH



28°30'00"

28°00'00"

28°30'00"

28°00'00"

96°30'00"

97°00'00"

97°30'00"

96°30'00"

97°00'00"

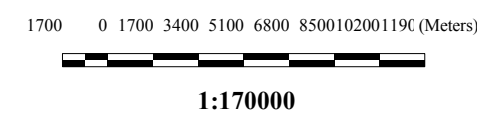
97°30'00"

45_HAYULIANG (ST)

REFERENCES

- | | | | |
|--|-------------------|--|------------------------|
| | Villages | | International Boundary |
| | Polling Station | | District Boundary |
| | District HQ | | Stream |
| | Circle HQ | | Unmetalled Road |
| | Assembly Boundary | | Metalled Road |
| | | | River |

Scale



POLLING STATION NAME

HAUYULIANG			
45_01_Kibithoo	45_21_Chowgong	45_41_Hayuliang HQ	45_61_Danglat
45_02_Yakung	45_22_Siet	45_42_Nenuliang	45_62_Tuwiliang
45_03_Walong	45_23_Yealiang	45_43_Baratu	45_63_Chaglongam
45_04_Tinai	45_24_Thalla	45_44_Taffaliang	45_64_Aphumna
45_05_Bah	45_25_Hamatong	45_45_Amliang	45_65_Taflagam
45_06_Yasong	45_26_Quibang	45_46_Naraliang	45_66_Mailiang
45_07_Sarti	45_27_Chambab	45_47_Raygam	45_67_Chakka
45_08_Samdul	45_28_Loiliang	45_48_Lamaliang	45_68_Metengliang
45_09_Blong	45_29_Manchal	45_49_Paya	45_69_Bomma
45_10_Longling	45_30_Phanglonglat	45_50_Tidding	45_70_Kromma
45_11_Quibom	45_31_Khamaiglat	45_51_Khrangliang	45_71_Pailiang
45_12_Kherang	45_32_Yatong	45_52_Malagam	45_72_Roiliang
45_13_Lautul	45_33_Gab	45_53_Huiliang	45_73_Gomin
45_14_Hawai	45_34_Chowalinag	45_54_Nilang	45_74_Hamaliang
45_15_Changuinty	45_35_Khuliang	45_55_Glotonglat	45_75_Chipru
45_16_Kamlat	45_36_Chiliang	45_56_Goiliang	45_76_Mithumna
45_17_Shiron	45_37_Zong	45_57_Tapang	45_77_Khupa
45_18_Nukung	45_38_Suplang	45_58_Brailiang	45_78_Chiron
45_19_Halaikrong	45_39_Kaning	45_59_Kasanglat	45_79_Khalega / Metengliang
45_20_Matkrong	45_40_Blom	45_60_Gamliang	