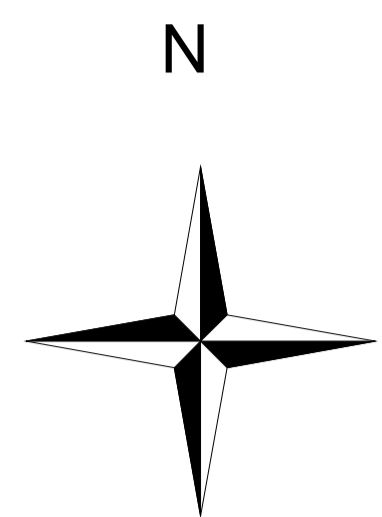


93°45'00" 93°50'00" 93°55'00" 94°00'00" 94°05'00" 94°10'00" 94°15'00" 94°20'00" 94°25'00" 94°30'00" 94°35'00" 94°40'00" 94°45'00" 94°50'00"

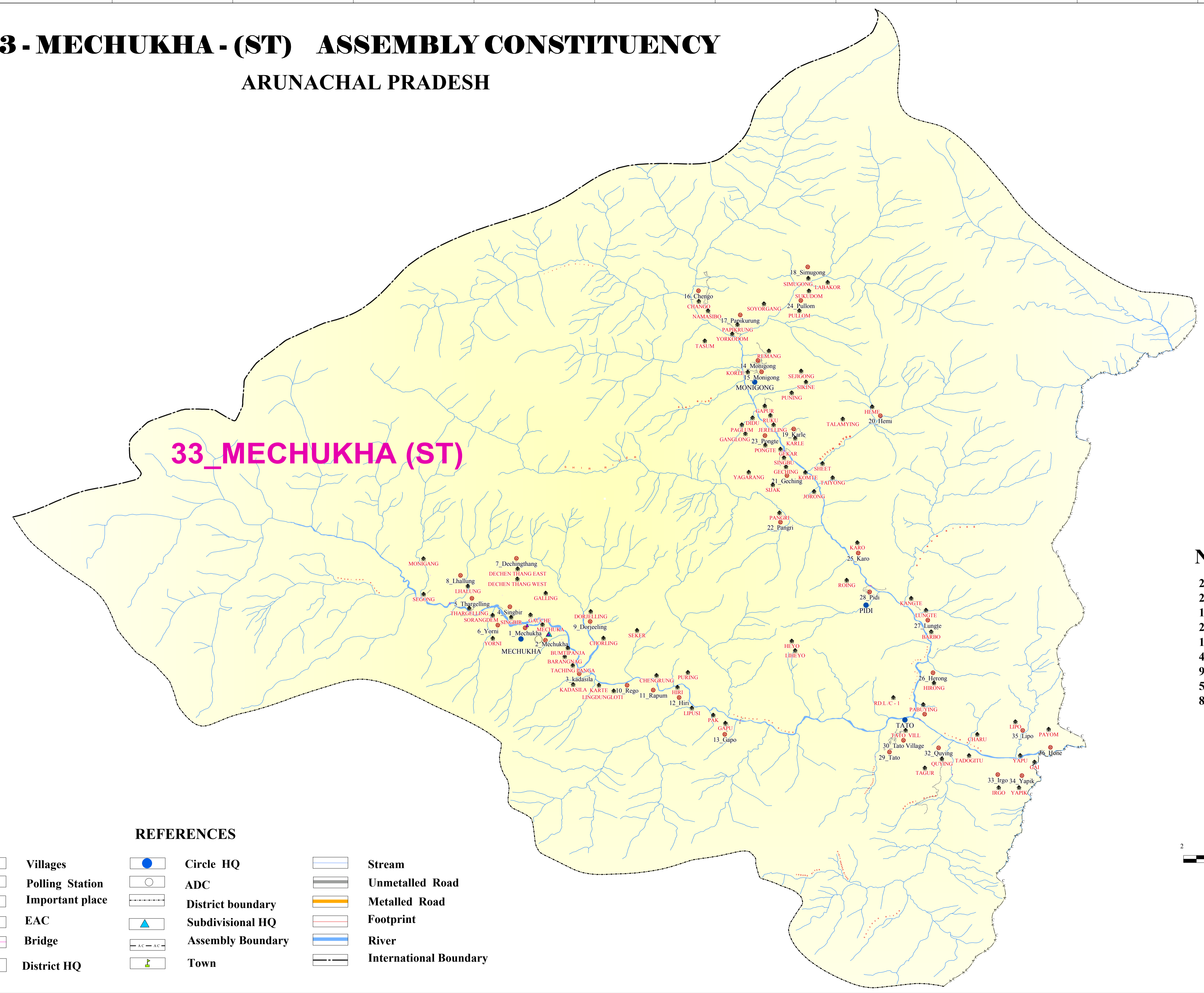
33 - MECHUKHA - (ST) ASSEMBLY CONSTITUENCY

ARUNACHAL PRADESH



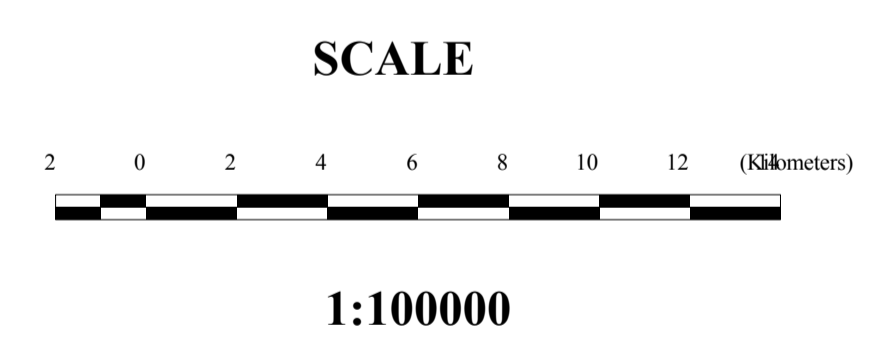
29°00'00"
28°55'00"
28°50'00"
28°45'00"
28°40'00"
28°35'00"
28°30'00"
28°25'00"

29°00'00"
28°55'00"
28°50'00"
28°45'00"
28°40'00"
28°35'00"
28°30'00"
28°25'00"



Number & Name of Polling Station

29_Tato	7_Dechingthang	18_Simugong	35_Lipo
28_Pidi	13_Gapo	20_Hemi	31_Pabuying
14_Monigong	12_Hiri	21_Geching	32_Quying
2_Mechukha	11_Rapum	22_Pangri	36_Hone
1_Mechukha	10_Rego	23_Pongte	3_kadasila
4_Singbir	15_Monigong	24_Pullom	6_Yorni
9_Dorjeeling	16_Chengo	25_Karo	27_Lungte
5_Thargelling	17_Papikurung	26_Herong	34_Yapik
8_Lhallung	19_Karle	33_Irgo	30_Tato Village



REFERENCES

	Villages		Circle HQ		Stream
	Polling Station		ADC		Unmetalled Road
	Important place		District boundary		Metalled Road
	EAC		Subdivisional HQ		Footprint
	Bridge		Assembly Boundary		River
	District HQ		Town		International Boundary

93°45'00" 93°50'00" 93°55'00" 94°00'00" 94°05'00" 94°10'00" 94°15'00" 94°20'00" 94°25'00" 94°30'00" 94°35'00" 94°40'00" 94°45'00" 94°50'00"