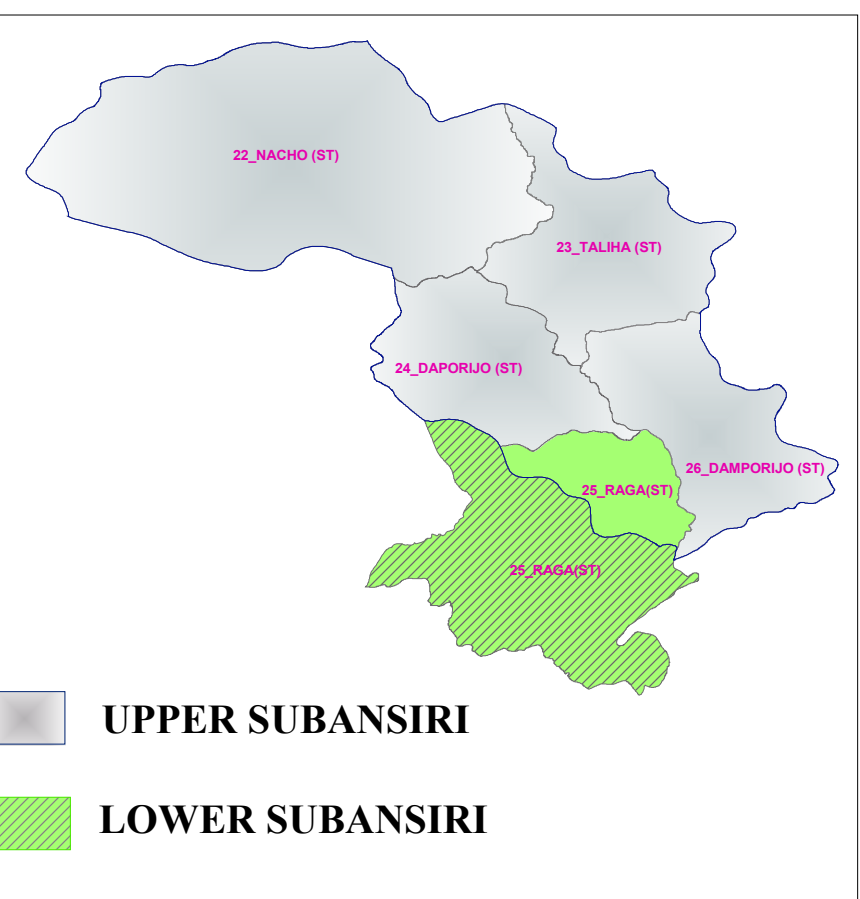
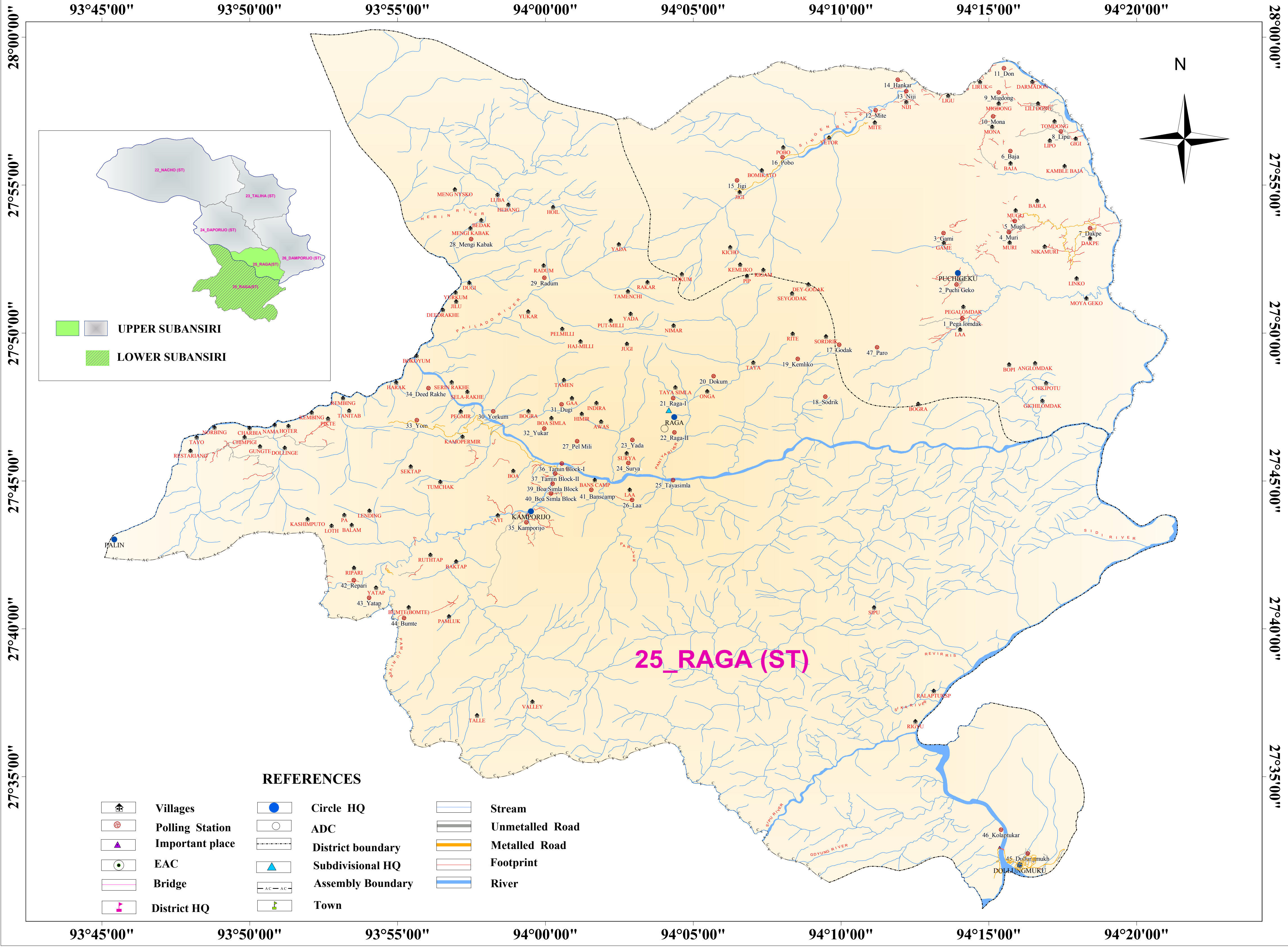


25 - RAGA - (ST) ASSEMBLY CONSTITUENCY

ARUNACHAL PRADESH



Number & Name of Polling Station

- | | | | |
|---------------|------------|------------------|-------------------|
| 1_Pega lomdak | 13_Niji | 25_Tayasimla | 37_Tamin Block-II |
| 2_Puchi Geko | 14_Hankar | 26_Laa | 38_Gaa |
| 3_Gami | 15_Jigi | 27_Pel Mili | 39_Boa Simla Bloc |
| 4_Muri | 16_Pobo | 28_Mengi Kabak | 40_Boa Simla Bloc |
| 5_Mugli | 17_Godak | 29_Radum | 41_Banscamp |
| 6_Baja | 18_Sodrik | 30_Yorkum | 42_Repari |
| 7_Dakpe | 19_Kemliko | 31_Dugi | 45_Dullungmukh |
| 8_Lipu | 20_Dokum | 32_Yukar | 46_Kolaptukar |
| 9_Migdong | 21_Raga-I | 34_Deed Rakhe | 47_Paro |
| 10_Mona | 22_Raga-II | 33_Yom | 44_Bumte |
| 11_Don | 23_Yada | 35_Kamporijo | 43_Yatap |
| 12_Mite | 24_Surya | 36_Tamin Block-I | |

SCALE



REFERENCES

- | | | |
|-----------------|-------------------|-----------------|
| Villages | Circle HQ | Stream |
| Polling Station | ADC | Unmetalled Road |
| Important place | District boundary | Metalled Road |
| EAC | Subdivisional HQ | Footprint |
| Bridge | Assembly Boundary | River |
| District HQ | Town | |